



EARTH TONES

JAMIE WILSON / ASSOCIATE EDITOR

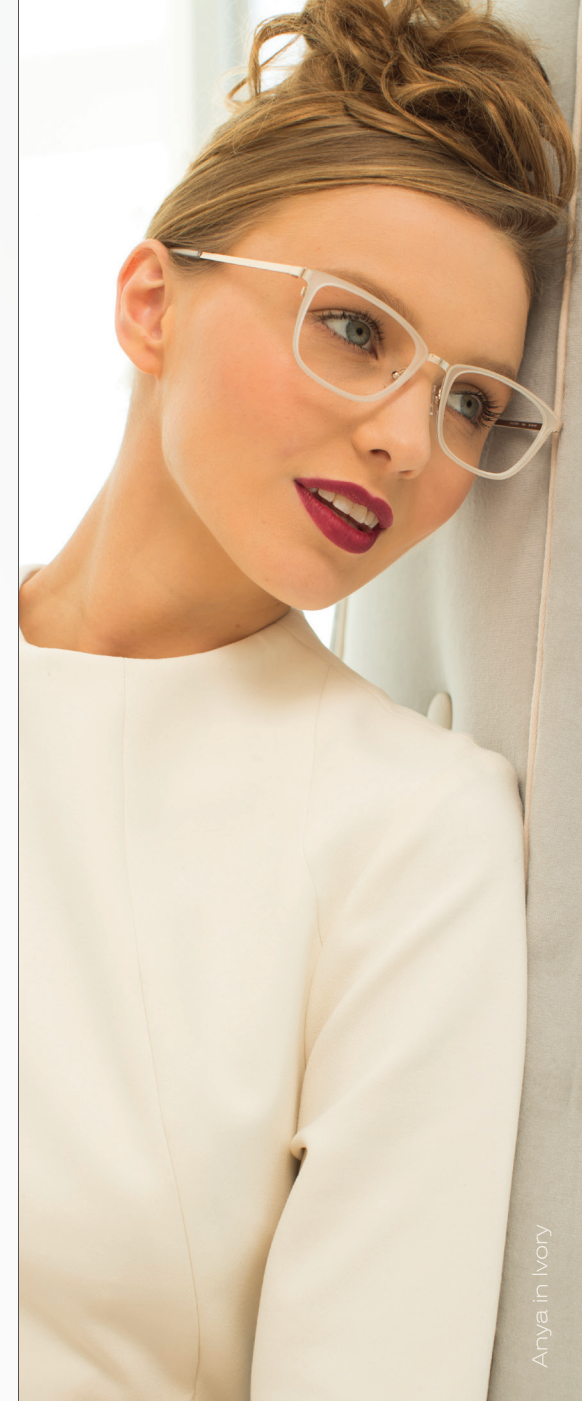
WHO: Themes of autumn such as falling leaves and unsaturated neutral tones, evoking the feeling of seasonal change and cooler temperatures.

WHAT: Neutral, earth tones such as variations of brown, beige or tan or Pantone-specific colors as stated in their Fashion Color Trend Report Fall/Winter 2018 including Pantone 14-1116 “Almond Buff” which is a natural baby camel shade with understated appeal or Pantone 16-1438 “Meerkat”—a highly adaptable toasty brown.

WEAR: (Top to Bottom) Modò’s **Paper-Thin Acetate** style 4518 shows off a rich palette of colors and textures, while the light and flexible Beta Titanium 153 provides luxury and comfort. This gold titanium style embellished with Havana tortoise offers an earthy blend of tones evoking an autumnal feel. From **L.a. Eyeworks**, the Meltdown style, showcases a classic, unisex design with its alternative square silhouette. Featured in an almond-esque tone, this frame carries the ideal neutral hue for the fall season. From Marcolin’s **Roberto Cavalli** collection, the Montevarchi 1094 frame showcases a variety of earth tones in its construction. This oversized square silhouette features a darker crystal beige around the lens with a lighter, more transparent hue encased around it along with glitter infused temples, creating a chic statement sunglass.

WHY: Earthy or **neutral** tones add structure and **foundation** to accessories and fashion. These stable **autumnal** shades allow the wearer to pursue expression through textures, prints and unexpected color combinations.

jwilson@jobson.com



Anya in Ivory

NEW IS IN
THE AIR

TRINA TURK
EYEWEAR

To see the entire collection
please visit mcgeegroup.com
or call 800.966.2020